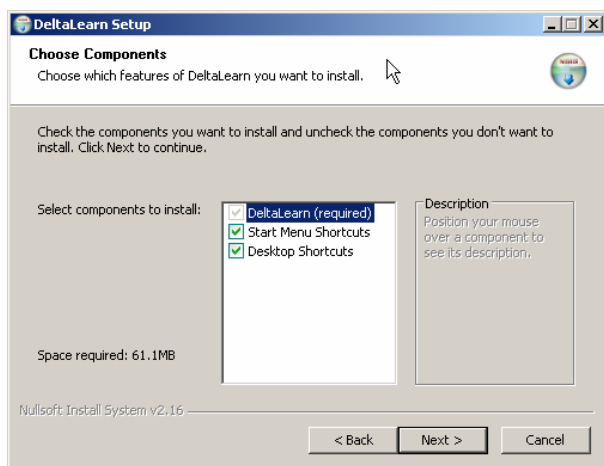


Installing Deltalearn Advanced SCORM editor under Windows 2000/2003/XP/NT/Vista

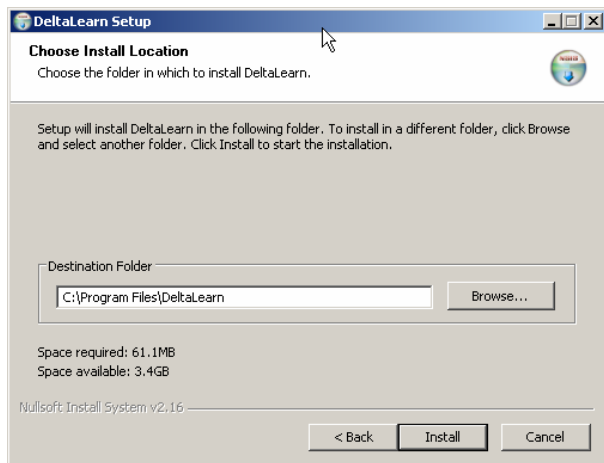
1) Double click on the Deltalearn ASE setup file. The installation wizard will begin:



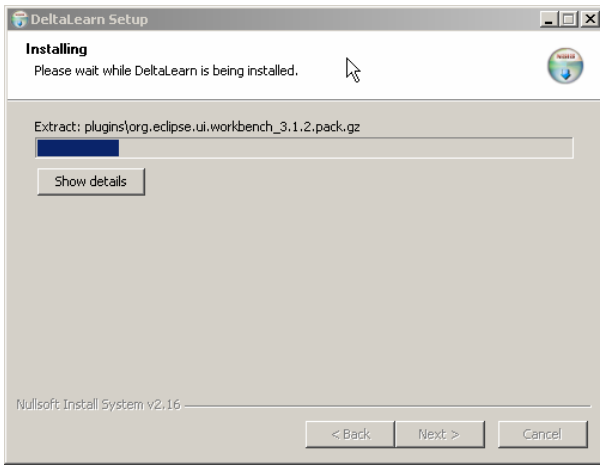
This screen welcomes you to the installation. Click **Next** to begin.



Select the components you would like to install and click **Next**.



Select the path where you would like to install the product and click **Next**.



The installation program will copy all required files to your hard drive.

2) Open Deltalearn Advanced SCORM editor from the Deltalearn program group.

If you have any questions or require assistance during the installation, please contact support@deltalearn.com, or via phone, call toll-free 1-212-404-6948.