

Deltalearn

Advanced SCORM editor 1.1

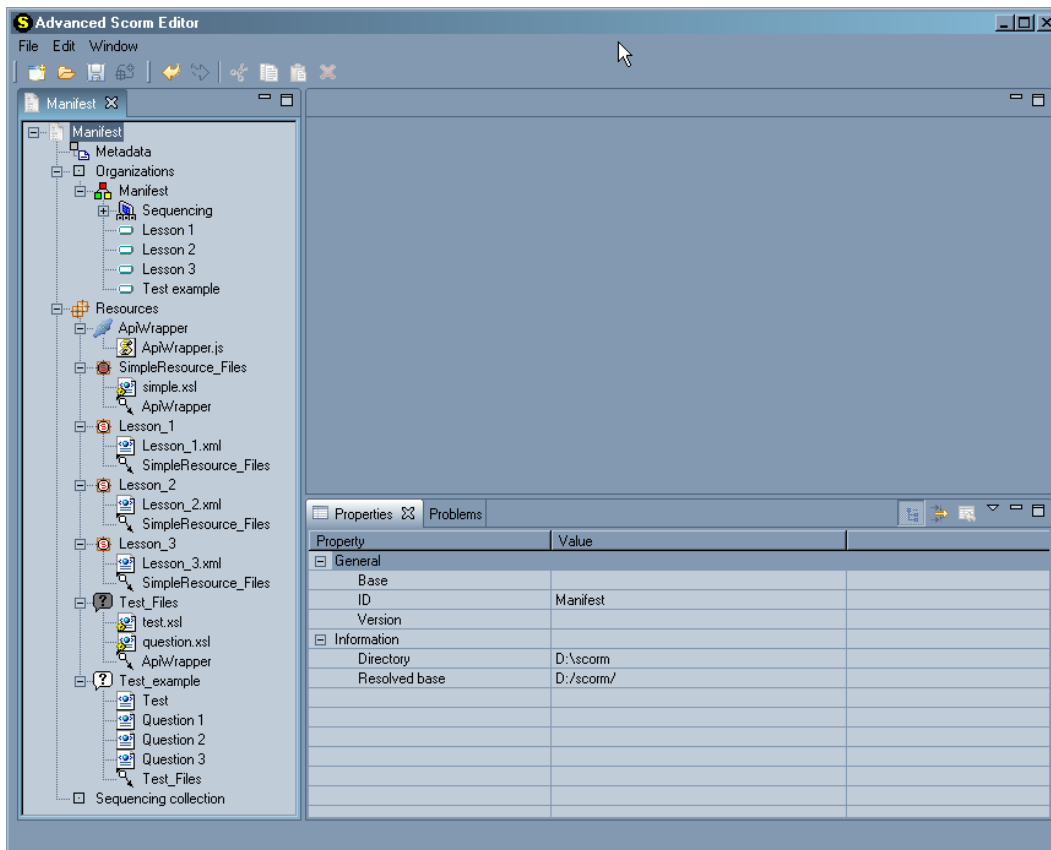
INTRODUCTION	3
USING DELTALEARN ADVANCED SCORM EDITOR	3
Usage Overview	3
Working with Courses	4
Creating a new Course	4
Creating Resources	4
Creating a Lesson	6
Creating a Test	6
Setting up Questions for a Test	7
One possible answer question	8
Multiple possible answers question	9
Fill the blanks question	10
Defining Sequencing Rules	11
Opening a Course	12
Saving a Course	12
Exporting a course to an LMS server	12
Using the Explorer	12
Code Viewer	12
Problems Window	12
Property Windows	13

1. Introduction

Deltalearn is an advanced XML editor that allows you to work with e-learning contents. The advantage of this tool is that it permits the user to easily group contents to quickly match SCORM rules.

2. Using Deltalearn Advanced SCORM Editor

2.1. Usage Overview



The Deltalearn main screen is divided in two sections, the left section called the Explorer and the right section called Viewer. The Explorer section is where the e-learning course contents are located and the Viewer section is where the properties and problems windows are located, as well as the viewer that displays resources.

Using the Explorer it is possible to right-click on objects and display the context menu which will offer the user an extensive set of options.

The viewer section has two fixed windows, the properties and problems windows. The property window shows all properties for objects selected on the Explorer, while the problems window displays all possible problems detected during the XML edition so the user is able to address them.

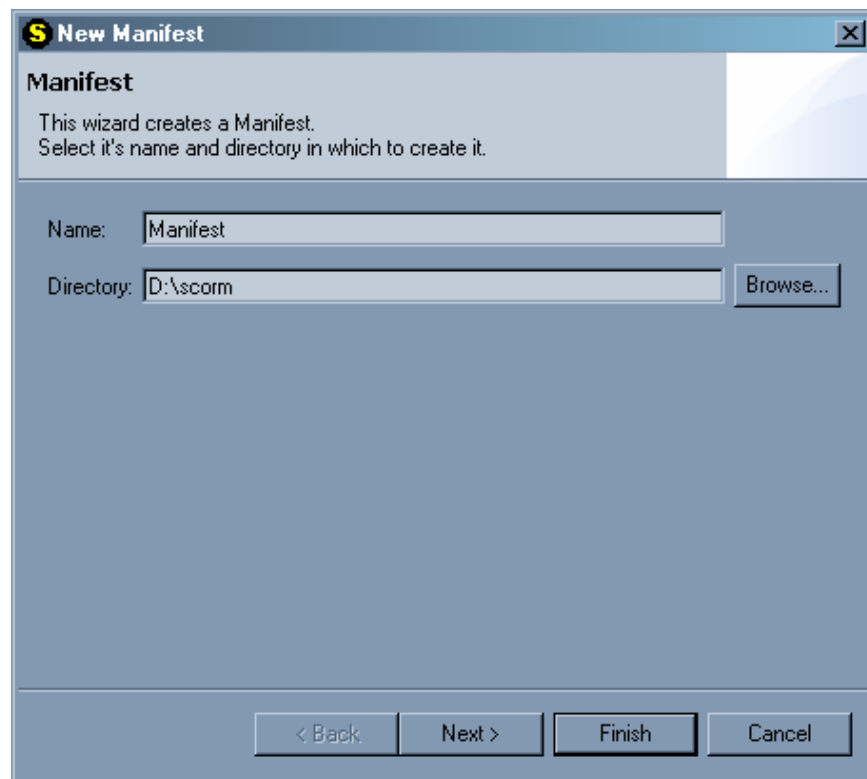
Above these two windows there is a section used to display or edit files and resources using the built-in viewer.

2.2. Working with Courses

2.2.1. Creating a new Course

Each course may contain several resources or organizations which are required to teach a certain subject. Deltalearn includes tools to easily design and generate complex course contents.

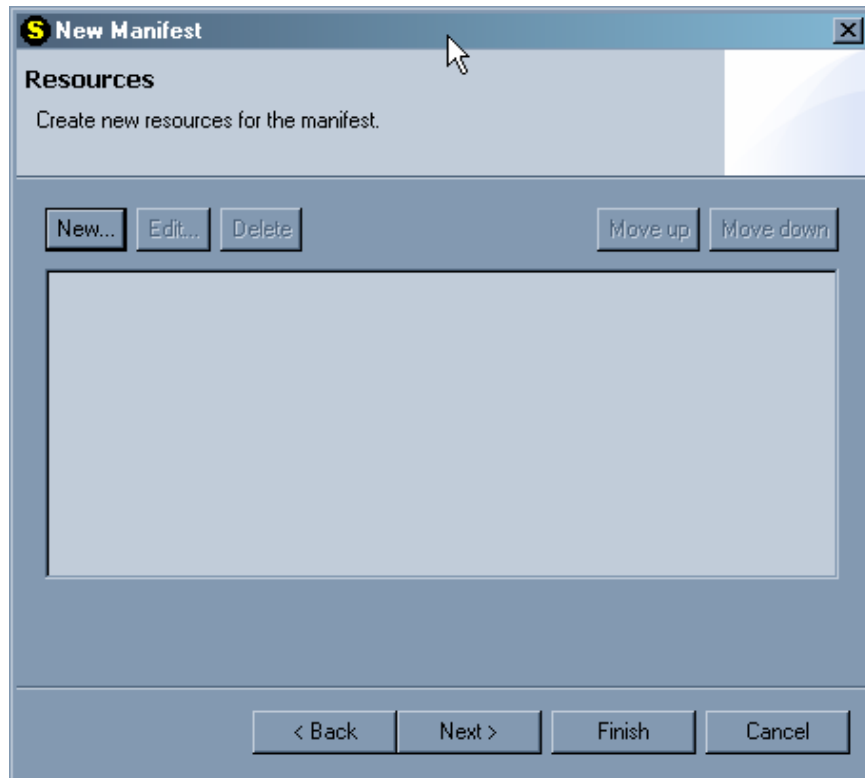
To create a new course click on "New Course" under the File option of the Deltalearn menu bar or using the "New Course" icon. A window will be displayed with a Wizard which will assist you throughout the creation of your new course.



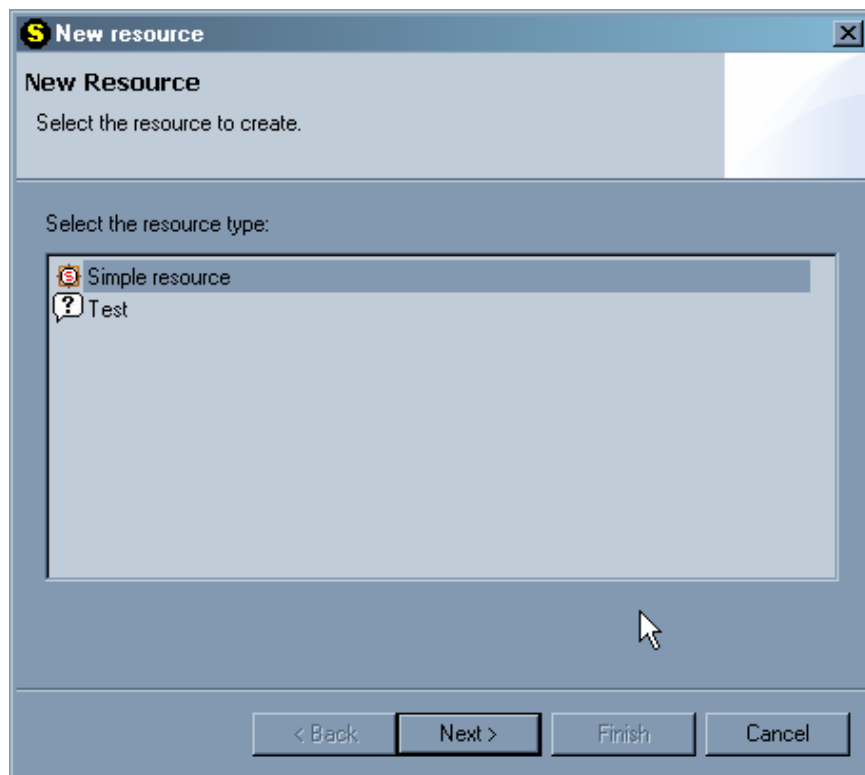
The first window will ask you to enter the name that you would like to assign to this course and the path to where this course project will be stored. This path can be entered manually or by browsing your file system using the "Browse..." button.

2.2.1.1. Creating Resources

Resources consist of all teaching material available for a certain course. There are several types of resources, most common are lessons and tests. Lessons contain all necessary information to understand a certain topic and be able to successfully pass an exam, while tests verify that the student has successfully acquired the information taught across the lesson.

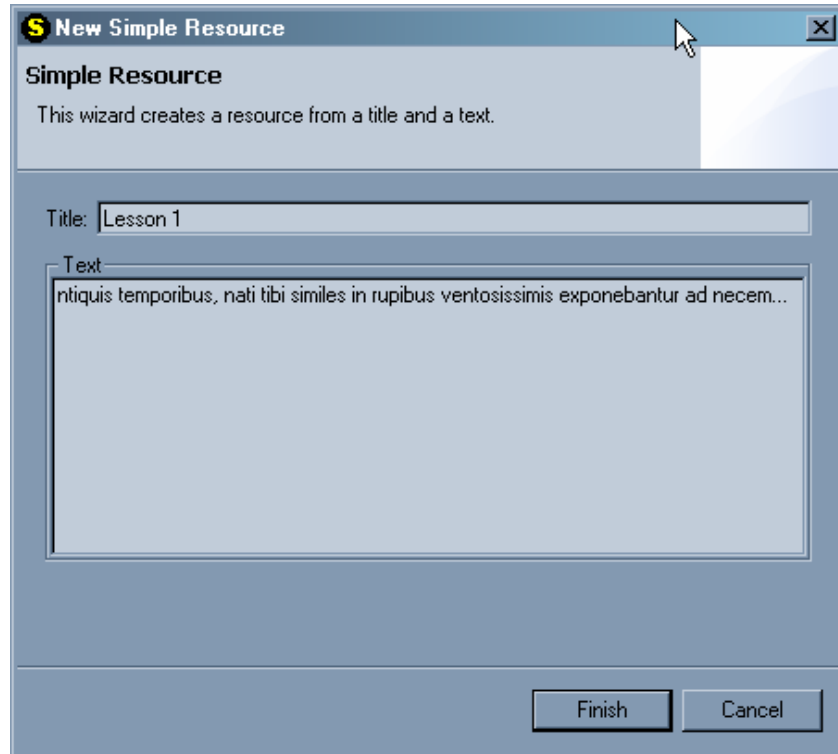


Once the course details have been entered click on "Next" to display the second wizard screen where the course resources are created. On this window, you may click on "New" to create a new resource which could be a lesson or a test.



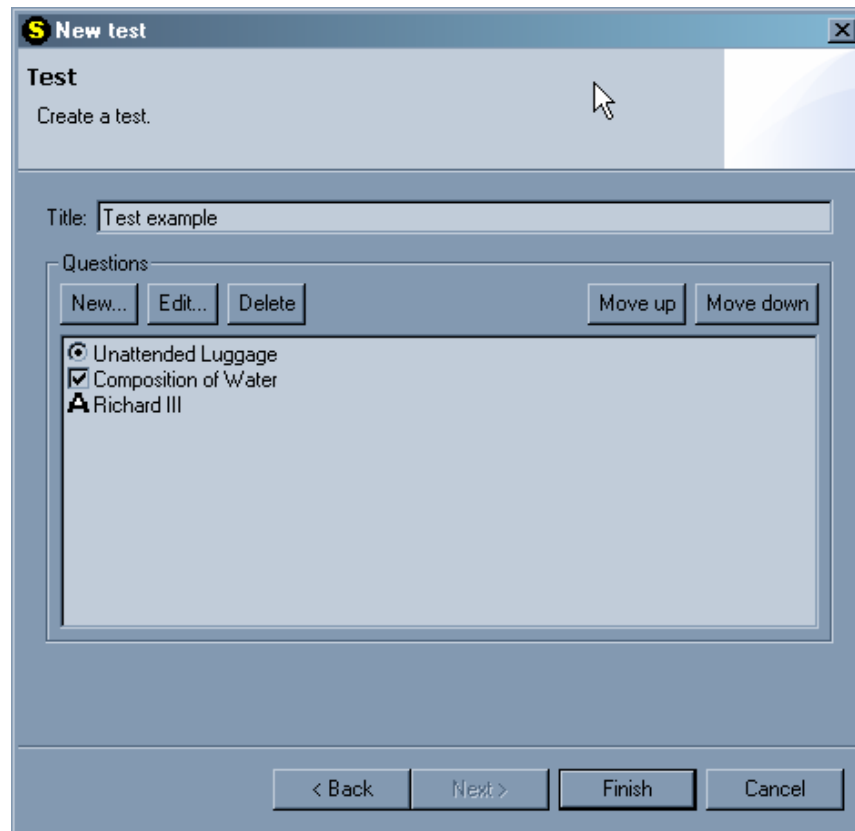
2.2.1.2. Creating a Lesson

If you select to create a new lesson, a window will be displayed where the lesson title and text can be entered.



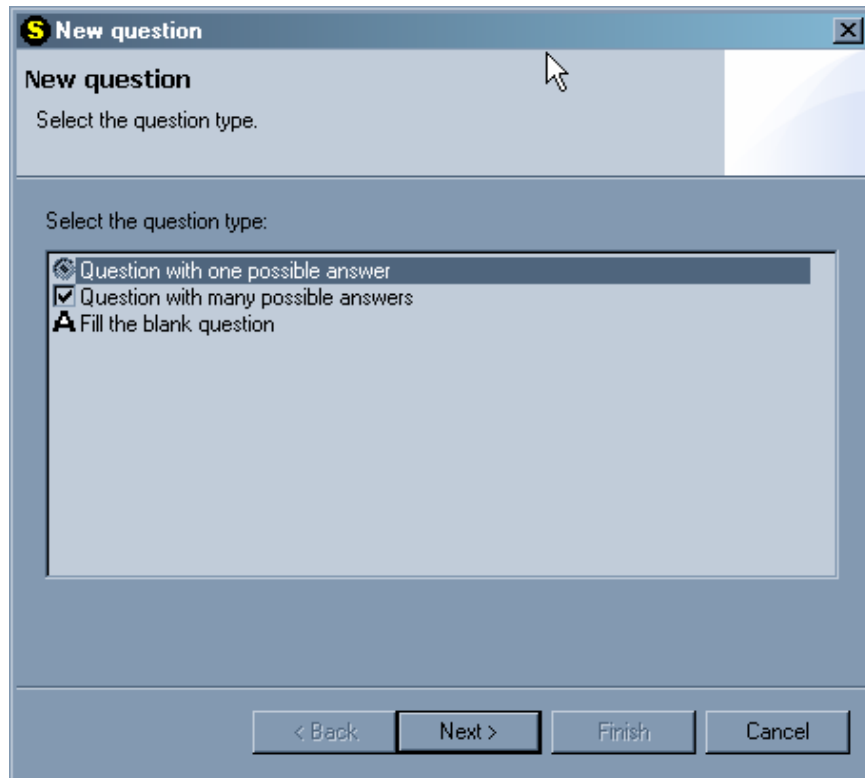
2.2.1.3. Creating a Test

If you select to create a new test, a window will be displayed where the question title can be entered. Clicking on "New" you will be able to create new questions.



2.2.1.4. Setting up Questions for a Test

The user is able to create three different types of questions:

A screenshot of a software dialog box titled "New question". The dialog has a blue header bar with a yellow "S" icon on the left and a close button on the right. Below the header, the text "New question" is followed by "Select the question type.". A larger section below contains the instruction "Select the question type:" and a list of three options: "Question with one possible answer" (with a radio button), "Question with many possible answers" (with a checked checkbox), and "Fill the blank question" (with a radio button). At the bottom of the dialog are four buttons: "< Back", "Next >", "Finish", and "Cancel".

S New question

New question

Select the question type.

Select the question type:

- Question with one possible answer
- Question with many possible answers
- Fill the blank question

< Back Next > Finish Cancel

2.2.1.4.1. One possible answer question

S New question [X]

Question with one possible answer
Select the title, question and answers for the question.

Title
Unattended Luggage

Question
What does "NEVER LEAVE LUGGAGE UNATTENDED" means?

Possible answers

Correct	Answer
1. <input checked="" type="radio"/>	You must stay with your luggage at all times.
2. <input type="radio"/>	Do not let someone else look after your luggage.
3. <input type="radio"/>	Do not let someone else look after your luggage.
4. <input type="radio"/>	
5. <input type="radio"/>	
6. <input type="radio"/>	
7. <input type="radio"/>	
8. <input type="radio"/>	
9. <input type="radio"/>	
10. <input type="radio"/>	

< Back Next > Finish Cancel

If selected, you may enter the question title, the question itself, and the different options for the answer, selecting the radio button next to the option that is correct.

2.2.1.4.2. Multiple possible answers question

S New question [X]

Question with many possible answers

Select the title, question and answers for the question.

Title
Composition of Water

Question
Which of the following elements are used to form water?

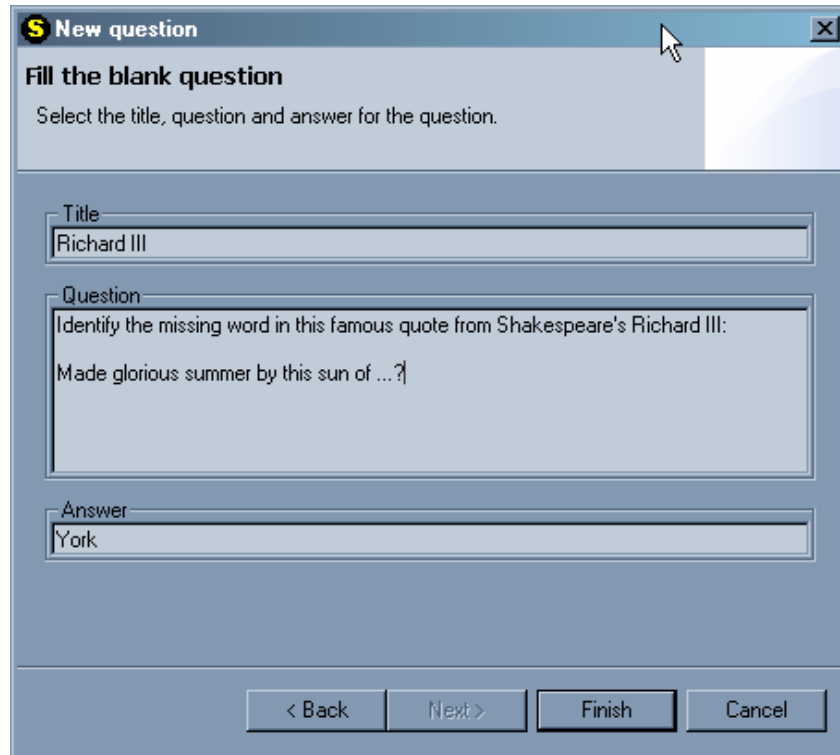
Possible answers

	Correct	Answer
1.	<input checked="" type="checkbox"/>	Hydrogen
2.	<input type="checkbox"/>	Helium
3.	<input type="checkbox"/>	Carbon
4.	<input checked="" type="checkbox"/>	Oxygen
5.	<input type="checkbox"/>	Nitrogen
6.	<input type="checkbox"/>	Chlorine
7.	<input type="checkbox"/>	
8.	<input type="checkbox"/>	
9.	<input type="checkbox"/>	
10.	<input type="checkbox"/>	

< Back Next > Finish Cancel

If selected, you may enter the question title, the question itself, and the different options for the answer, selecting the checkbox next to the options that are correct.

2.2.1.4.3. Fill the blanks question



S New question

Fill the blank question
Select the title, question and answer for the question.

Title
Richard III

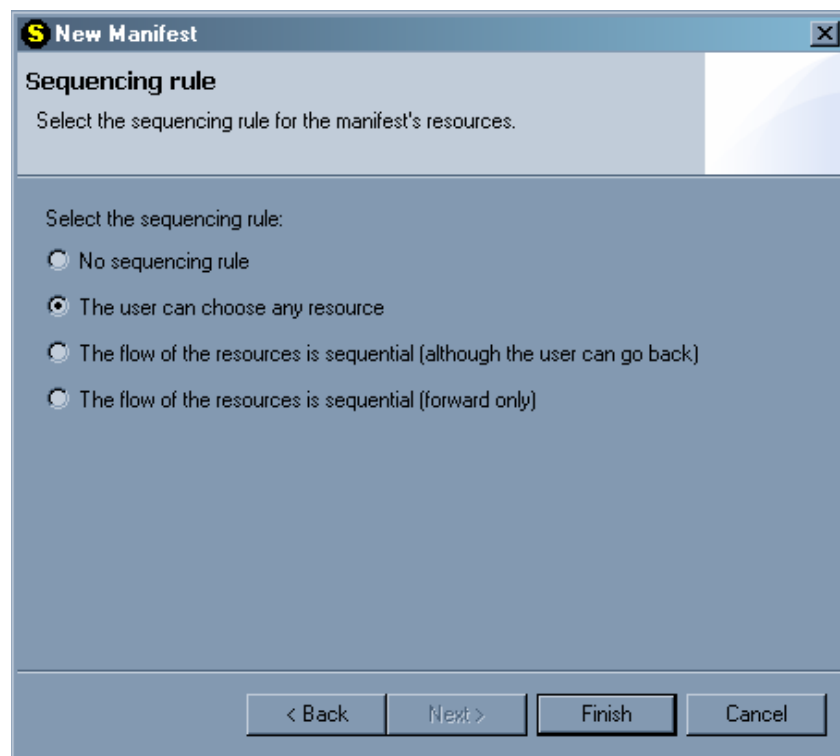
Question
Identify the missing word in this famous quote from Shakespeare's Richard III:
Made glorious summer by this sun of ...?

Answer
York

< Back Next > Finish Cancel

If selected, you may enter the question title, the question itself and the expected answer.

2.2.1.5. Defining Sequencing Rules



S New Manifest

Sequencing rule
Select the sequencing rule for the manifest's resources.

Select the sequencing rule:

- No sequencing rule
- The user can choose any resource
- The flow of the resources is sequential (although the user can go back)
- The flow of the resources is sequential (forward only)

< Back Next > Finish Cancel

The sequencing rules wizard allows you to define different sequencing types to browse across resources:

- No sequence
- The user can choose any resource
- The flow of the resources is sequential, but the user may go back.
- The flow of the resources is sequential, forward only.

2.2.2. Opening a Course

To open an existing course click on “Open Course” under the File option of the menu bar, or using the Open icon. Using the file explorer window, select the course you would like to open. Once opened, the explorer will display the complete structure for the course including resources and organizations.

2.2.3. Saving a Course

Once you have verified and fixed all reported problems, as well as checked all properties of all components, you may save the course by clicking on Save button.

2.2.4. Exporting a course to an LMS server

Once the course is saved you may click the export button to export all course materials to a ZIP file which can be read by any SCORM compliant LMS.

2.3. Using the Explorer

The explorer displays a tree with all objects that are part of the course project:

- Course: This is the main unit of the project generated by Deltalearn, within a course multiple resources and organizations can be created.
- Resources: They are all material required to teach a certain topic. A resource could be a lesson, an evaluation, a strategy or other type of educational contents.
- Organization: An organization is how the course contents are organized and presented to the user. You may have multiple organizations per course. Each organization has inside it sequencing rules, it may also have metadata (extra information) and as many items as necessary.

2.4. Code Viewer

Files with .js and .xls extensions can be edited from Deltalearn. There are different options to open a file, including open it as a text file, open with the Javascript viewer, open with the Javascript editor, open with the XML editor or open with the system editor.

2.5. Problems Window

The problem window is located in the lower section of the Viewer and it informs the user while the course is being created about problems which conflict with the SCORM standard.

To open the problems window, click on the Problems tab of the Viewer and a list of problems with a brief description will be displayed. You may also activate this tab from the "Show Windows" option under the "Window" menu.

When possible, Deltalearn offers a solution to the reported problems. By right clicking on the problem description, a listing with options will be displayed and depending on the nature of the problem, the "Repair" option will be shown to automatically correct the issue. In the event that Deltalearn is not able to automatically repair the problem, a description is shown to allow the user to correct the issue manually.

2.6. Property Windows

The properties window is located in the lower section of the Viewer and it displays the features and options for each one of the components of the course.

To open the properties window, click on the Problems tab of the Viewer and a list of properties for the selected component will be displayed. You may also activate this tab from the "Show Windows" option under the "Window" menu.

To display properties for a certain object, it has to be selected from the explorer.